

# Downloading the files

To download the files required to upgrade your EC Series instrument, Please follow these instructions:

1 – Open you Web Browser (Internet Explorer, Chrome, Firefox etc.)



2 - In the address bar enter the address : <ftp://ftp.lvinfo.co.uk>

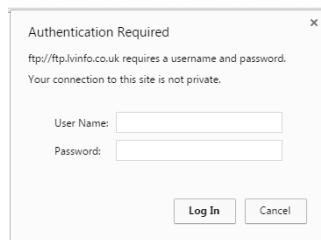


3 - A login box will appear, enter the following information:

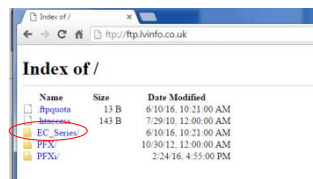
User name:

[instruments@lvinfo.co.uk](mailto:instruments@lvinfo.co.uk)

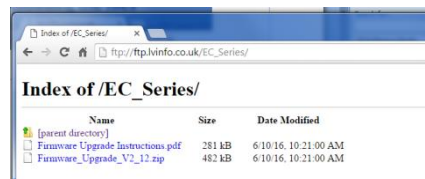
Password: zZ2KzeAz



4 - Go to the directory: EC\_Series



5 - Click on the upgrade file, This is a zip file containing the Firmware upgrade image and instructions for installing onto your EC Series instrument.



# Upgrading the instrument

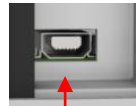
For the latest version of the EC 2000 and EC 3000 firmware please contact [service@tintometer.com](mailto:service@tintometer.com).

1 - Connect the EC Series Instrument to the Host Computer using the USB cable provided.



2 - Ensure the cable connector is inserted into the socket in the correct orientation. The symbol on the USB connector should be facing down.

Top of Instrument

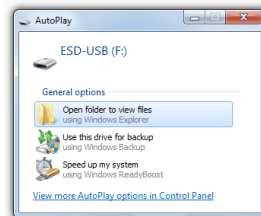


Top of Connector

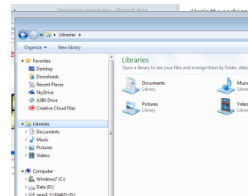
3 - Turn on the instrument



4 - If an 'Autoplay' popup appears on the Host Computer select 'Open folder to view files'.



5 - Otherwise open windows explorer and select the appropriate Removable Disk.



6 - The disk contents will be similar to the following:

Name	Date modified	Type	Size
Image	23/03/2016 16:23	File folder	
CheckSd.bin	01/01/2013 11:00	BIN File	1 KB
ERRLOG.TXT	01/01/2013 11:00	Text Document	1 KB
Pr000.V1a	01/01/2013 11:00	V1A File	1 KB
Pr-01.V1a	01/01/2013 11:00	V1A File	1 KB
SETTINGS.BIN	01/01/2013 11:00	BIN File	1 KB

7 - If the 'Image' folder is present delete it and its contents.

Name	Date modified	Type
Image	23/03/2016 16:23	File folder
CheckSd.bin	01/01/2013 11:00	BIN File
ERRLOG.TXT	01/01/2013 11:00	Text Document

8 - Copy the new 'Image' folder from the upgrade package to the instrument.

9 - Turn off the instrument.



10 - Press and hold the 'Read' button (the left hand button on the instrument keypad). Whilst holding this button, turn the instrument on.



11 - Continue to hold this the Read button until the screen turns white. The instrument is now installing the upgrade package. When installation is complete the instrument turns off.



12 - Turn the instrument on.



13 - Confirm that the Firmware has been successfully installed by checking the Firmware Version field on the Information screen.

